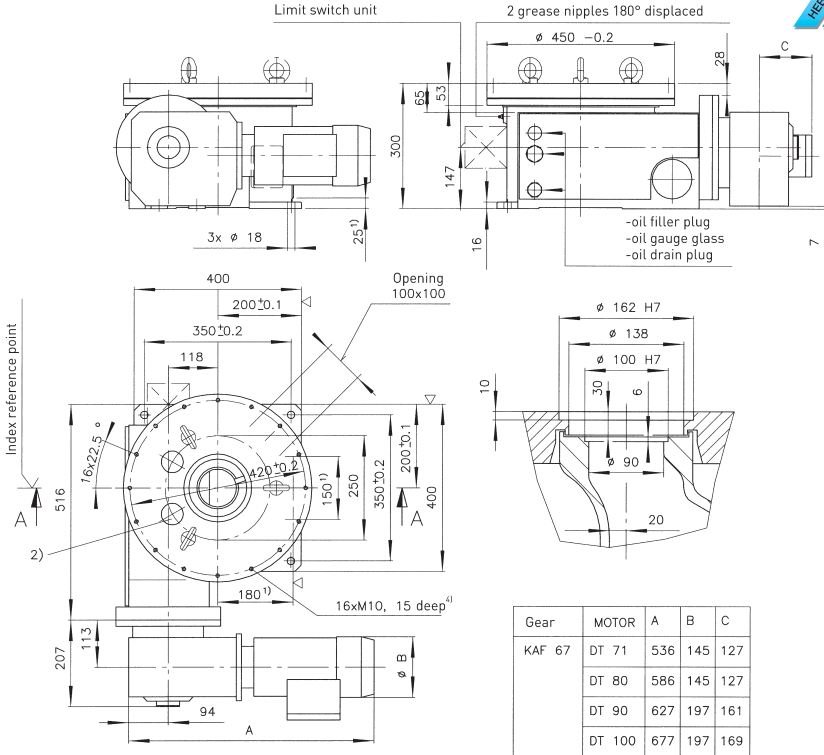
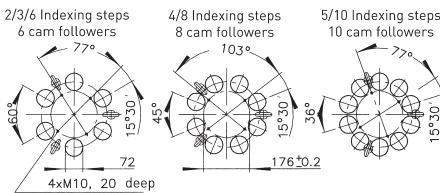


Precision index drives for rotary motions



²⁾ Location of the cam followers at the index reference point (Free areas must be provided accordingly in the tool plate)



For transportation of the turntable with eyebolts, 3 tapped holes M16x30 deep have been arranged on ø 280.

¹⁾ For the dimensions of limit switch units, accessories or special design, please ask for a separate drawing.

³⁾ Screwing surface 150x125.

⁴⁾ Standard fixing hole pattern. Special hole pattern at extra price on request.

Technical data

Static bearing capacity of table plate bearing
(theoretic factors of the bearing manufacturer)

$C_{OA} = 418000 \text{ N}$

$C_{OR} = 176000 \text{ N}$

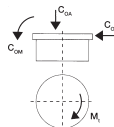
$C_{OM} = 39000 \text{ Nm}$

Permissible resulting tangential moment, due to process related forces incurred while the table plate is at standstill: $M_t = 1000 \text{ Nm}$

Order example:

EDA450 4 2,5 400 V - 50 Hz

— Type
— Indexing steps
— Cycle time
— Motor data



Indexing steps

Standard indexing steps: 2,3,4,5,6,8,10
further indexing steps on request

Tool plate

Mounting of tool plate see drwg.

Accuracy

order: ± 58 angular seconds

Total weight

High-precision performance upon request
approx. 225-240 kg (depending on size of motor)
C-flange motor acc. to requirements

Motor

Remark

This type range permits the construction of special models with different technical data. In order to prepare a detailed offer, we would need exact technical information.